

The Hyphens

A Newsletter for E-M-F, Flanders
and Everitt Owners Everywhere



Volume 21, Issue 2 September 2023
Copyright 2023 E-M-F Homepage

Editor's Column

I hope that your summer has been as enjoyable as mine has. It seems as though every summer is busier than the one before.

I worked frantically to try and get the 1909 Lindsley Dart I received from my cousin last year running in time for the Labor Day Old Threshers show we attend every year. I wanted to take both the Sears Motorbuggy and the Dart with us, and I was able to get it running well enough to do so. I did end up working on it before and during the five-day show and by the second day or so, I had it running well. I still have carburetor issues to work out on it though.

Unfortunately, both cars took some damage at the show due to the boulder-like gravel on one of the roadways I needed to drive. One of the front wheels on the Sears became so loose it is no longer drivable until I address it. I was able to get it back into its place in our basement. I am hoping to have the wheel repaired before next summer.

Another highlight of the summer was the Celebration of Brass show at the Gilmore Car Museum. If you were not able to attend, you missed out on a great time. You can read more about it in this issue.

Thanks to the following who have donated funds since the last issue to help fund the registry and E-M-F Homepage website.

- Bob Troendly
- Tom Ruggles
- Scott Langenegger
- R.S. "Chic" Gasparotti

Thanks to all who have helped over the years. Hope to see you down the road!

Happy Motoring!!!

John M. Daly

Don't Forget

Hershey E-M-F Registry
Meeting, Wed 10/4 @ 4:00
PM Hershey time at
Jim Gorel's spaces CI 73-75



A view of the line-up of some of the E-M-F Family of marquees featured at the 2023 Celebration of Brass at the Gilmore Car Museum in Hickory Corners, MI.

Celebration of Brass Recap

By John Daly

When I was first contacted about having the EMF family of marquees featured at this 2023 Celebration of Brass show in the Gilmore Car Museum, I was excited at the possibility, but also apprehensive as to whether people would be willing to bring their cars to Michigan for such an event. But I found that I had no reason to be apprehensive at all when the EMF registry turned out for this event.

I have never been to a show where there were more examples from the E-M-F family of cars on display than model T Fords! I believe we had 18 cars present that represented the EMF family of marquees.

I really enjoyed talking to all the different owners, being able to look at their cars close-up, take good photographs of their cars, and of course, just sitting around and talking cars as the day went by. The older I get, the more I look forward to the people aspect of a show such as the Celebration of Brass. It is like a reunion of sorts where I get to see old friends and make new ones.

And let's not forget all the other beautiful automobiles on display! I even got a chance to ride in a 1911 Cole pony tonneau – which I have known about my entire life (and even tried to buy on multiple occasions. Just another one of those cars that got away from me).

As far as the E-M-Fs were concerned, it was impressive to see that line-up of cars down the entire length of road. Everything from roadsters to racecars, touring cars to demi tonneaus, E-M-Fs, to Flanders, to

Everitts and Northern. The baby E-M-F showed up to play as well. There were even parts of a Tiffany Electric car present at the banquet. Don't know how the Tiffany fits into the E-M-F story? Look it up some time or reference Hyphens from September 2009.

The Gilmore Museum is such a beautiful place to hold this event. The grounds have a wonderful circuit of paved roads which can be driven while enjoying the surroundings. I was fortunate to be able to not only cruise the grounds in several cars, but to also drive an E-M-F thanks to Scott Langenegger. I even got an "I Rode in a Horseless Carriage" button from Scott's mother Linda which I now proudly display.

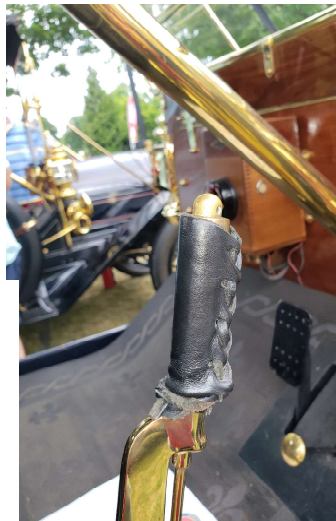
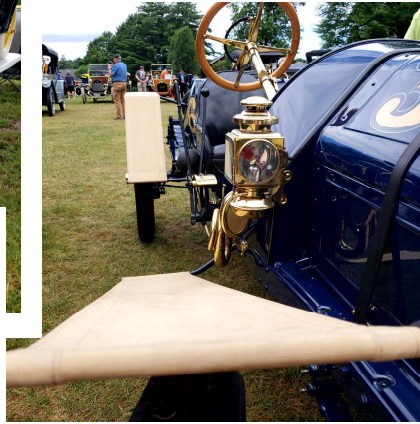
In addition to all of the above, there is also the fantastic collections of automobiles on display in multiple buildings. When you add it all up, you have a destination that should be a must for any car person.

The event was capped off by an evening of fellowship and dining, ending with a fantastic presentation by Dr. William Flanders Spencer on the E-M-F company and his family's involvement, being the great-grandson of Walter Flanders.

Such a fun time was had by all and I think it will be an event that will be remembered for a long time... at least in my own mind it will be.

Enjoy the photos included on the following pages. I hope you will consider joining us for the next event planned by the E-M-F Registry. Don't miss out on the fun!!!

Photos from the 2023 Celebration of Brass



E-M-F Shift Gate Reverse Lockout Info Wanted

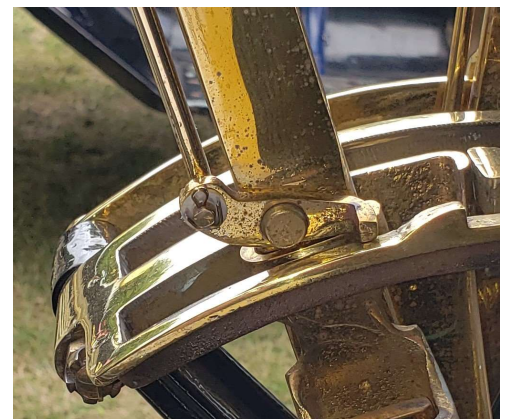
During the celebration of brass, I was looking at Tom Ruggles' 1909 EMF touring car which he recently restored and was discussing the car with him. He pointed out something interesting on the shifting gate of that car that I have not seen on any other E-M-F.

Tom's car is equipped with an interlock to keep you from being able to shift into reverse without meaning to. You cannot get into reverse without pushing a button on the top of the shifting lever to release an interlock. Pushing the button allows the shifting lever to be able to slide up into the reverse position.

I have not seen this type of interlock on any other E-M-F, including all of the other 1909s that were present at the Celebration of Brass show.

Tom and I wondered if any other cars included this interlocking mechanism. Tom's car is an early E-M-F and perhaps this was a feature on the early cars which did not appear on the later cars, although several of the other E-M-Fs present at the show were also very early cars and this feature did not exist on them.

I wonder if any other E-M-F registry members cars have this interlock? Take a look at the pictures included on this page and see if your car might have such a feature. Please let me know if your car has a similar setup and I will report back whether anybody happens to contact me saying that they have a similar setup in a future issue of the Hyphens'. It would be interesting to learn as much as possible about this.



Showing the lock out mechanism with shift lever past the lockout going into reverse.



Push button at top of shifting lever disengages the lockout.

President's Message

*By Daryl Kemerer,
E-M-F Registry President*

The Joy of Dreams Come True Youthful Fantasy

The visits to grandma and grandpa's house with my mother, where I sneaked views of my Uncle George's car collection, along with watching parades and restoring dad's 1914 Model T; these events gave birth to my daydreams. I dreamed of driving a brass-era car and sharing the joy of the car hobby with others. My buddy from across the street and I, with my mother in the back seat of the Ford, chauffeured her to an amusement park for the Old Fashioned Days picnic. Mother in the Ford with her period costume told stories and also walked about with her parasol open to keep the sun off her perspiring face. Meanwhile, my buddy and I opened the hood and told stories, embellishing our part in the restoration. We had hoped we might attract and impress some young girls with a drive around the picnic area, but alas we only chatted with adults answering questions (blah)! Still, it was a day of dreams come true. The Ford even performed its part in this adventure flawlessly. I was smitten, not by some young teenage girl, but by the lure of brass-era automobiles for the time of my life!

A Dream for Every Man's Fancy

I could go a lot of different directions with that title, but I'll stay with my golden daydreams of brass-era cars. I matured during the era when the cars of the 50's and 60's changed with chrome and new styling each and every year. As nice as the new models were, to me brass-era cars were the poor man's gold. One night, in my 20's, I dragged home my 1912 E-M-F touring in a U-Haul truck in pouring rain and intermittent headlights. What a way to begin life with an E-M-F! My dreams of E-M-F and Flanders cars came throughout the decades. My wife Kathy became my mechanic, and we found the joy of touring and the camaraderie of so many friendly and helpful people as we toured in Canada and the United States. The joy of visiting new and special places and touring with many helpful and wonderful new friends provided us with many fond memories through the decades.

Beyond the dreams of touring and sharing friendships within the antique car hobby, I entertained daydreams of promoting the E-M-F and Flanders automobiles. Connecting with like-minded others began at the annual Hershey meet. Floyd Jaehnert became a close friend and together we dreamed of establishing an E-M-F Registry with the HCCA. I had a list of owners of E-M-F, Flanders and early Studebaker automobiles compiled by Wally Grover which we used for our initial attempt to gather members. The decision was made to expand the Registry to include brass-era automobiles related to E-M-F, both prior and after the company's existence. The dream was coming to fruition and John Daly, being younger and

with more computer savvy, offered to be the center of communications, compiling the Registry members and publishing a newsletter, "The Hyphens."

Kathy and I dreamed of having a tour, the E-M-F Outing, for the E-M-F Registry and over the years (2004-2018) we have had eight revivals of the E-M-F Company Outings with great success. All of the tours were a joy, as we shared together memories and kibitzing while we tinkered and toured with our cars. The E-M-F Company 100th anniversary was for me the most memorable Outing. William Flanders Spencer, great-grandson of Walter Flanders, headed the planning committee. The entire week was a dream fulfilled with more joy than anyone could have imagined.

The E-M-F Registry has provided opportunities for people to exchange ideas and solutions to restoration and encouraged others to reproduce essential parts for E-M-F and Flanders repairs. In addition, the Registry has 2 meetings each year: a spring meeting at Chickasaw hosted by Tom Ruggles and John Daly, and a fall meeting at Hershey. And not least, the Registry has promoted an international exchange about these automobiles. The E-M-F Registry fulfills Every Man's Fantasy of having somewhere, someone to go to for support in their quest to perfect their brass-era car!

Out of Nowhere

A daydream came true when I learned that the Gilmore Museum had selected E-M-F as the featured marque for the Celebration of Brass III. What an amazing surprise and honor to have E-M-F chosen before other marquees, to participate in the Celebration, connect with old and new friends, explore the museum, and tour together. This recognition of the E-M-F Company was a fulfillment of my deeply held daydream. I have for decades believed that the E-M-F Company was not well recognized for its significant influence in the development of the early automobile industry. William F. Spencer's excellent presentation of Walter Flanders' life and contribution to the industry at the Celebration's banquet underlined my decades-long belief. Now when someone asks "what does EMF stand for?" my reply shall be

"the car chosen for the Celebration of Brass III by the esteemed Gilmore Museum." In addition, E-M-F stands for Even More Famous!

Days Yet to Come

Well, I have mused over some of my life-long daydreams long enough. The multitude of daydreams I have had throughout the decades are resting deep in my being; and entering my garage elicits memories like pages from an exciting novel. So many of my dreams have come true, especially the 100th anniversary tour in Detroit, and the 115th anniversary of the company founding celebrated at the Gilmore. Such great memories signal that it's time for me to turn left and relinquish the presidency of the Registry to someone else. I am grateful to have worked with so many of you to build and sustain our Registry, allowing it to reach beyond my dreams. I thank you all for all that you do for the hobby. As noted in earlier president's messages, there is an increased interest in preservation and restoration of E-M-F and brass cars in general, including the younger generations. For example one of the young E-M-F owners in Canada, Ian Hayhurst, has established a site on Facebook to share information. This is a forward-looking addition of an important goal of the Registry – to help one another. The Registry can and will grow through sharing the dreams of others. New horizons for the future of the Registry are boundless. As a professor once told me "don't be afraid to dream." Work towards all of your dreams in life even when you think they won't come true. When you're older, you become aware that they did in fact come true. May your daydreams be happy and plentiful as you motor down the highway of life!

Even More Forever,
Daryl Kemerer

P. S. I'm not going away. If I can assist you do not hesitate to contact me. It would be a joy to talk and share.

P. S. S. Thomas Deptulski is planning an E-M-F Outing for next summer. More info at the Hershey meeting at Jim Gorel's spot, CI 73, Wednesday, Oct. 4 at 4:00 pm.



Daryl and Kathy Kemerer in their beautifully restored 1911 E-M-F Roadster.

E-M-F Registry Statistics

By John M. Daly

Continuing from the last issue, let's look at some more numbers from the E-M-F Registry Database. Here are the **Flanders**:

Total 1909 Flanders: 1

- Suburban: 1

Total 1910 Flanders: 21

- Touring: 1
- Suburban: 6
- Roadster: 10
- UNKNOWN: 4

Total 1911 Flanders: 29

- Touring: 8
- Suburban: 5
- Demi Tonneau: 5
- Roadster: 5
- UNKNOWN: 6

Total 1912 Flanders: 35

- Touring: 9
- Suburban: 3
- Roadster: 16
- Delivery: 1
- Coupe: 1
- UNKNOWN: 5

Total Flanders Motorcycles: 6

- 1911: 2
- 1912: 2
- 1913: 1
- 1914: 1

E-M-F Parts For Sale

Two **EMF carburetors** for sale. Less complete one \$175, more complete \$375. Happy to answer any questions. **Layden Butler** CONTACT INFO REMOVED

The following E-M-F Items for sale:

2 **EMF logo headlight chimneys** \$50/pr
 4 **EMF Hubcaps** - good condition \$100/4
 EMF Wrenches **Hubcap A-1309** \$25 (5 available)
 Wrenches **A-1310** 1" X 1" \$20 each (6 available)
 Wrenches **A-1312** 5/8" X 1/2" \$15 each (2 available)
 Pictures available. **Jim Wayman** CONTACT INFO REMOVED

E-M-F Services

Rear Wheel Hub Pullers custom made for the E-M-F (and other cars).
<http://customhubpullers.com/> or call **George** at CONTACT INFO REMOVED

Metal spinning's one inch to 96 inch's, all metals for early cars. Brass lights and other parts. Call me to discuss your needs! **Larry Gibson** Kirksville, MO. CONTACT INFO

E-M-F Parts Wanted

I am looking for an original **Radiator Cap for an E-M-F 30**. I need one for my 1912. Not sure if they are different for the different years. If you have one laying around that you do not need, please let me know.

Also, I would like to find a **restore-able hood appropriate for a 1912 E-M-F**. I am not sure if they are different than other years. I assume the hoods on the Demi-Tonneau are the same as a 5-Passenger touring or Roadster. I do not see a different part listed in the parts manual. Please let me know if you have a spare laying around you would be willing to part with.

John Daly – CONTACT INFO REMOVED

E-M-F Autos For Sale

1912 Flanders 20 roadster - \$27,000.

Steve Creager CONTACT INFO REMOVED

A Thought to Ponder

The word "queue" is just a Q followed by four silent letters.

"The Hyphens" is the official publication of the "E-M-F Registry" – an affiliated registry of the **Horseless Carriage Club of America**. There are no membership dues at this time. Donations are accepted to help with the cost of the newsletter and Website. President: **Daryl Kemerer** - CONTACT INFO REMOVED Vice President: **Floyd Jaehnert** - CONTACT INFO REMOVED Main Contact/Newsletter Editor/Webmaster/Secretary/Treasurer: **John M. Daly** - CONTACT INFO REMOVED - Visit us online at <http://EMFAuto.org>

Upcoming E-M-F "30" Events

October 4th, 2023 4:00 PM Hershey Time - E-M-F Registry Owners Meeting at 2023 Hershey AACA Fall Meet – at Jim Gorel's spaces CI 73-75. If you are going to Hershey, please plan on attending. **For more information contact: Daryl Kemerer** CONTACT INFO REMOVED

March 15th, 2024 4:00 CDT - E-M-F Registry Meeting at Chickasha Pre-WWII Meet on the Friday afternoon of the show. It will be in one of the meeting rooms in the south building. This will be a time to meet up with other owners, register your E-M-F with the E-M-F Registry, check/update your E-M-F Registry information, and discuss the future of the E-M-F Registry. If you are going to Chickasha, please plan on attending. **For more information contact: Tom Ruggles** CONTACT INFO REMOVED

NOTE: If you have received this issue via US mail, and have an email address, can you please send me an email at CONTACT INFO REMOVED so I can save some money and start delivering *The Hyphens* by email?